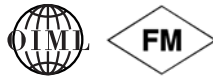
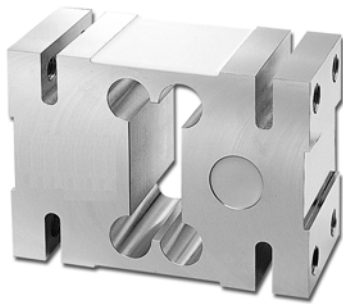


High Capacity Off Center Single Point Load Cell



FEATURES

- Capacities: 750, 1000, and 2000kg
- Fully sealed for water resistance
- Side mount construction
- Anodized aluminum alloy
- OIML C3 approval
- Platform size: 48" x 48"/120cm x 120cm

OPTIONAL FEATURE

- FM approval available

DESCRIPTION

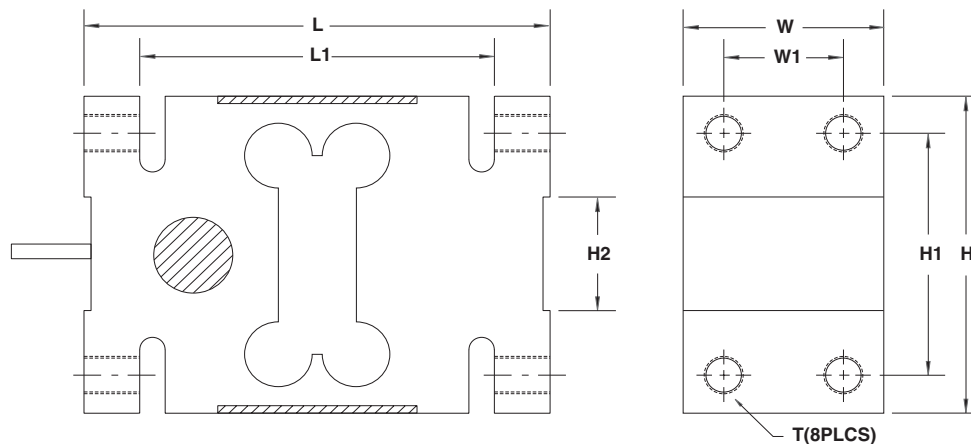
HOC is a single-point load cell of side mount construction designed for platform scales, and hanging scales. It is a cost-effective load cell for scales of simple construction.

HOC is constructed of anodized aluminum, and is environmentally sealed up to IP66 providing excellent protection against moisture and humidity.

APPLICATIONS

- Platform scales (single load cell)
- Packaging machines
- Dosing/filling
- Belt scales/conveyor scales

OUTLINE DIMENSIONS



All Capacity
Cable Length: 10'/3.1m
Platform Size: 48" x 48"/120cm x 120cm

Wiring diagram

- + Excitation Red
- Excitation Black
- + Signal Green
- Signal White

CAPACITY (kg)		L	L1	W	W1	H	H1	H2	T
750/1000/2000	mm	176.0	134.5	76.0	46.0	125.0	95.0	45.0	M16 x 2.0
	(inch)	6.93	5.30	2.99	1.81	4.92	3.74	1.77	

SPECIFICATIONS

PARAMETER	VALUE		UNIT
	Non-Approved	C3	
NTEP/OIML Accuracy class			
Maximum no. of intervals (n)	1000	3000	
$Y = E_{max}/V_{min}$	5000	10000	Maximum available
Standard capacities (E_{max})	750, 1000, 2000		kg
Rated output-R.O.	2.0		mV/V
Rated output tolerance	10		±% of rated output
Zero balance	1		±% of rated output
Non linearity	0.020	0.015	±% of rated output
Hysteresis	0.020	0.015	±% of rated output
Non-repeatability	0.020		±% of rated output
Creep error (20 minutes)	0.030	0.020	±% of rated output
Zero return (20 minutes)	0.030	0.020	±% of rated output
Temperature effect on min. dead load output	0.0026	0.014	±% of rated output/°C
Temperature effect on sensitivity	0.0015	0.008	±% of applied load/°C
Compensated temperature range	-10 to +40		°C
Operating temperature range	-20 to +60		°C
Safe overload	150		% of R.C.
Ultimate overload	200		% of R.C.
Excitation, recommended	10		Vdc or Vac rms
Excitation, maximum	15		Vdc or Vac rms
Input impedance	410±10		Ohms
Output impedance	350±3		Ohms
Insulation resistance	>5000		Mega-Ohms
Construction	Anodized aluminum		
Environmental protection	IP66		

All specifications listed subject to change without notice.

FM Approval

Intrinsically Safe: Class I, II, III; Div. 1 Groups A-G

Non-Incendive: Class I; Div. 2 Groups A-D

Disclaimer

All product specifications and data are subject to change without notice.

Vishay Precision Group, Inc., its affiliates, agents, and employees, and all persons acting on its or their behalf (collectively, "Vishay Precision Group"), disclaim any and all liability for any errors, inaccuracies or incompleteness contained herein or in any other disclosure relating to any product.

Vishay Precision Group disclaims any and all liability arising out of the use or application of any product described herein or of any information provided herein to the maximum extent permitted by law. The product specifications do not expand or otherwise modify Vishay Precision Group's terms and conditions of purchase, including but not limited to the warranty expressed therein, which apply to these products.

No license, express or implied, by estoppel or otherwise, to any intellectual property rights is granted by this document or by any conduct of Vishay Precision Group.

The products shown herein are not designed for use in medical, life-saving, or life-sustaining applications unless otherwise expressly indicated. Customers using or selling Vishay Precision Group products not expressly indicated for use in such applications do so entirely at their own risk and agree to fully indemnify Vishay Precision Group for any damages arising or resulting from such use or sale. Please contact authorized Vishay Precision Group personnel to obtain written terms and conditions regarding products designed for such applications.

Product names and markings noted herein may be trademarks of their respective owners.